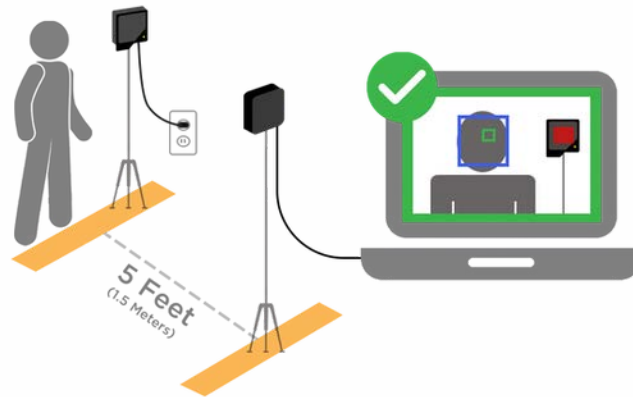


Simple Temperature Screening



How it works

Specifically designed and calibrated to deliver accurate skin temperature measurements while enabling social distancing protocols. In seconds, the system automatically detects a face, identifies the most reliable facial features for measurement, and displays an estimated body temperature. A visual and audible alert is provided if someone is warmer than the customizable alarm temperature.

Unlike typical industrial thermal cameras, Our system was developed for precise temperature measurement and maximizes accuracy by referencing a fixed heat source with a known temperature value. Our patent-pending heat source allows us to achieve much higher accuracy than a standard thermal imaging camera designed for industrial use. Any system that does not have a reference heat source does not follow new FDA guidelines published April, 2020, despite manufacturer claims. Further, these guidelines require the system to measure only one subject's temperature at a time. Many systems on the market today measure multiple people in a scene.

Our process provides an additional layer of preventive screening and can deliver more peace of mind to businesses, institutions and participants.



*** Tripods and Windows PC not included.**

516.704.7054

sales@mbsnetworks.com